

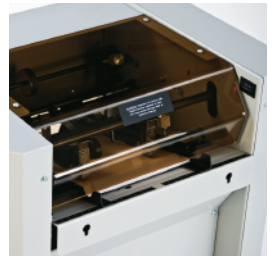
## → SPRINT 5000 BOOKLETMAKER

jogs, staples, and folds in one operation | quick and easy set-up and adjustment | variable speed | produces booklets up to 88 pages (off-line)\* | on-line saddle, corner, and side stapling capability | "fold only" capability | heavy-duty staple clinchers produce "flat-finish" staples | 2 stapling heads, 5 stapling positions | uses high-capacity, 5,000-staple cartridges | auto-stop and signal when staple cartridge is empty | powered exit conveyor | transparent safety access cover—machine will not operate with cover in open position | mounted on heavy-duty casters | interfaces with wide range of collators including the MBM FC 10 | optional face trimmer

Dimensions (D x W x H): 23 x 46 x 36 inches (20 W with conveyor stored), Shipping weight: 280 lbs.



### SAFETY ACCESS COVER



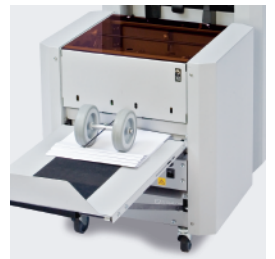
The transparent safety access cover will not allow machine to operate when open.

### POWERED CONVEYOR



A powered exit conveyor stacks booklets neatly and folds away for compact storage.

### OPTIONAL TRIMMER



An optional face trimmer trims booklets up to 100 pages.\*

### → SPRINT 5000

Speed	1,500 sets/hr*
Sheet capacity	22*
Paper size	5 1/2" x 8" to 12" x 18"
Power supply	115 V, 60 Hz

\* may vary due to variations in paper and power supply

Dealer:

**MBM**  
CORPORATION

3134 Industry Drive  
North Charleston, South Carolina 29418  
800-223-2508, fax: 843-552-2974  
[www.mbmcorp.com](http://www.mbmcorp.com)

**IDEAL.MBM**  
CORPORATION

1675 Sismet Road, unit 4  
Mississauga, Ontario L4W 4K8  
800-387-2528, fax: 905-840-1114  
[www.ideal-mbm.com](http://www.ideal-mbm.com)



Olmedo Badía S.A. de C.V.  
[www.olmedobadia.com](http://www.olmedobadia.com)  
[info@olmedobadia.com](mailto:info@olmedobadia.com)  
Tel. (55)5557-0397

All technical data is approximate and subject to change. © MBM Corporation, 12/2011.